

All-in-One Reality Capture

- Construction documentation
- As-built designs
- Facilities management

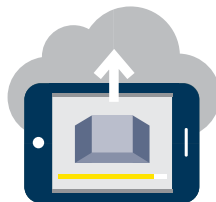


Matterport's quick and easy-to-use platform is proven to help you be more efficient and cost-effective. Spend less time in the field and office by creating immersive, realistic, and complete representations of any place that can be shared with anyone, anywhere.



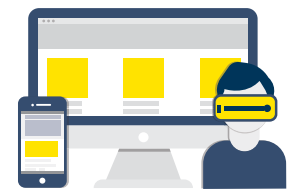
I am here:

to scan your site faster than a laser scanner



Upload your site:

our cloud software will do the rest



Share your site:

email collaborators a simple link

Construction documentation



One file, replacing thousands of photographs



Effective communication with key stakeholders



Permanent, annotated records at every milestone



*[With Matterport]
we are now able to capture construction conditions for documentation on a single file and share that information as needed as opposed to managing 30,000+ individual photographs."*

William Plato, VDC Manager, Hensel Phelps

Ready for drywall
Use # 100321591 Firecode Core
5/8

As-built drawings



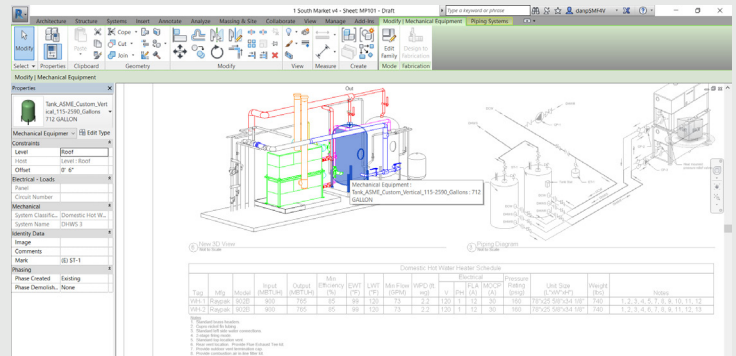
Easily create point clouds and OBIs



Import into any CAD software



Take measurements from every angle



The Matterport Pro camera has allowed us to complete designs in hours that would have otherwise taken weeks."

-Eric Wiens, Project Engineer, CIMA+

208-890-9709

950 HOWE ST.

BOISE IDAHO 83706

www.360idaho.com/

Let's work together today!

360
IDAHO.COM